

FRONT VIEW

END VIEW

**CONSTRUCTION SPECIFICATIONS:**

CONCRETE PROPERTIES: 5000 PSI (35 MPa) MINIMUM STRENGTH  
 RISER COVER MAY BE USED WITH 4-7% AIR ENTRAINMENT  
 PLASTIC INLET AND OUTLET BAFFLE  
 INLET AND OUTLET POLYSEALS ACCEPT 3" OR 4" ABS OR PVC PIPE  
 DIMENSIONS IN INCHES AND (mm)  
 MEETS CSA-B66-05  
 REINFORCING MEETS: G30.14.M1983  
 : ASTM C1116 TYPE III

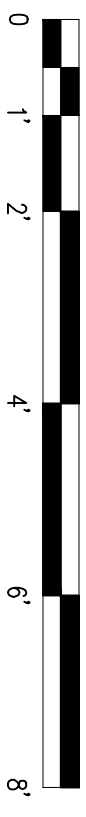
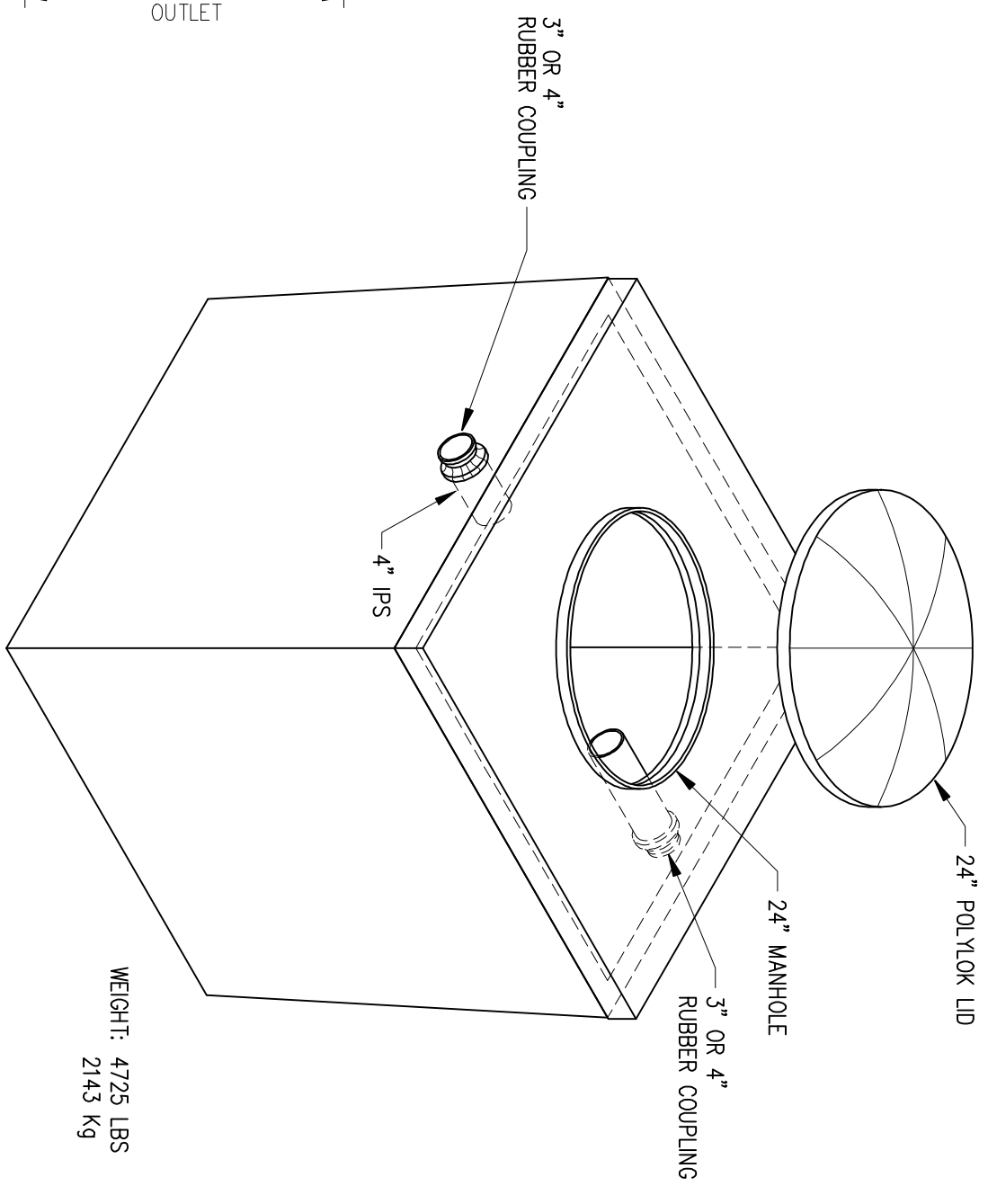
**ENGINEERED FOR 1m OF BURIAL DEPTH.**

**MATERIALS:**

CONCRETE: TYPE 10 PORTLAND, 35 MPa AT 28 DAYS  
 STANDARD SEE B66-05 SECTION 5

**NOTES:**

- DELIVERY IS MADE BY CRANE EQUIPPED TRUCKS, EXCAVATION SHOULD BE 1FT LARGER THAN TANK MINIMUM DIMENSIONS AND BE ACCESSIBLE FOR UNLOADING FROM THE REAR OF THE TRUCK. MINIMUM OVERHEAD CLEARANCE OF 18FT IS REQUIRED.
- FOR INSTALLATION INSTRUCTIONS, REFER TO CSA AND STANDARD PRACTICES MANUALS.



1	AS BUILT	REV. REINFORCING MEETS AND MANHOLE SIZE	KC	AD		07/27/09					
REV NO	ISSUED FOR	REVISION DESCRIPTION	DWN	DES	CHK	APP	DATE	REF NO	DWG NO	REFERENCE DRAWING	

**MANCO**  
**SEPTIC SOLUTIONS**  
**400 IMP. GALLON (1816 LITRES)**  
**PUMP CHAMBER LAYOUT**

DP MACHINE AND DESIGN LTD				DES	DWN	CHECK	DATE	DRAWING NUMBER	REV
				AD	KC		05 10 10	PUMPCHAMBER-400	1
				400_PUMP_CHAMBER					